



# **2019/20 WARD BASED PLAN FOR WARD 02**

## 1. INTRODUCTION

CBP is a form of participatory planning which has been designed to promote community action. CBP establishes a participatory process for mobilising communities and planning around grassroots issues and how they (issues) can relate to the broader municipal planning perspective. The CBP process is a forerunner to the IDP.

It captures what communities see as their desired outcomes and this helps speed up the implementation of the IDP. Ultimately the process will assist the Municipality to achieve its long term development framework's vision of having an improved quality of life for its citizens.

## 2. BACKGROUND

The plan was developed as per community engagements/consultations as follows: -

Date: March 2019      Venue: Majozini Community Hall

Approximately 180 people were in attendance, mostly by women, man and the elderly. The meeting was facilitated by the representative of the Municipality, Mr K.B Dlamini assisted by Mr. Z.E. Mpontshane.

## 3. SITUATIONAL ANALYSIS

Ward 02 is situated to the South east of Jozini town the majority of the land belongs to the Ingonyama Trust (Traditional authority areas). The area is predominantly rural and underdeveloped. Ward 02 is approximately 15 000 ha.

### Social Profile

Most of the people of ward 02 are unemployed and are relying mostly on social grants.

Population Estimation	: 11 100
Children	: 2 000
Men	: 2 000
Women	: 5 000
Senior Citizens	: 2 000
Disabled	: 100

### **Economic Status**

The ward is characterised economically by middle and low income earners, a large number of grantees and unemployed people.

### **Resources**






Primary schools	: 5
Secondary schools	: 4
Clinic	: 1
Community Hall	: 3

### **Government Intervention**

There are two (2) government project in the ward, EPWP, which employs youth from destitute households to cut grass and maintenance in the ward. The Department of Health employs people from low income households in the ward as Community Care Givers. Vuka uzenzele an initiative by the department of Transport whereby the also cut grass along the road.

### **Needs**

There is a great need for housing, employment, waste removal and efficient service delivery. This ward is very rural in nature and 60% houses are constructed with both wood or mud/cement mixture. Their needs are as follow below:

-  Houses
-  Water and Sanitation
-  Access Roads
-  Electricity
-  Clinics

## **4. EXISTING SERVICES**

The following services and service providers in the ward:-

<b>SERVICES</b>	<b>SERVICE PROVIDER</b>
Clinic	Dept of Health
400 houses	Dept. of Human Settlements & Jozini Municipality
Hospital	Dept of Health
Court of Justice	Dept of Justice
SASSA	Dept of Social Welfare

Clinic	Dept. of Health
Access Roads in Impala	Jozini Municipality
Child support grants	Dept. of social development
Community Halls	Jozini Municipality

## 5. SWOT ANALYSIS OF THE WARD

<p><b>STRENGTHS</b></p> <ul style="list-style-type: none"> <li>✚ Religious sites</li> <li>✚ clinic</li> <li>✚ Halls</li> <li>✚ Schools</li> <li>✚ CWP &amp; EPWP providing job opportunities</li> </ul>	<p><b>WEAKNESSES</b></p> <ul style="list-style-type: none"> <li>✚ Lack of housing</li> <li>✚ Lack of recreational facilities</li> <li>✚ Lack of resources</li> <li>✚ Social ills</li> <li>✚ High rate of unemployment</li> <li>✚ Teenage Pregnancy</li> </ul>
<p><b>OPPORTUNITIES</b></p> <ul style="list-style-type: none"> <li>✚ Job creation</li> <li>✚ Satellite police station</li> <li>✚ Life skills programmes</li> <li>✚ Improve standard of living</li> <li>✚ Youth Centre/Programmes</li> <li>✚ CPF</li> <li>✚ War room to speed up service delivery &amp; assist with grant, identity applications etc.</li> </ul>	<p><b>THREATS</b></p> <ul style="list-style-type: none"> <li>✚ School drop outs</li> <li>✚ Over-crowding/over population</li> <li>✚ Spread of HIV/AIDS diseases</li> </ul>

## 6. WHAT DO WE WANT TO ACHIEVE?

### 6.1. Desired outcomes identified

- ✚ Infrastructural development
- ✚ Water and Sanitation
- ✚ Housing
- ✚ Electricity
- ✚ Schools
- ✚ Roads
- ✚ Clinics
- ✚ Recreational facilities ( SOCCER FIELDS)
- ✚ Skills Development Centres
- ✚ Job Opportunities
- ✚ Libraries

- 🚧 Crime Prevention
- 🚧 Social Ills
- 🚧 Satellite Police Station
- 🚧 Decrease in HIV/AIDS orphans/deaths
- 🚧 Literacy/Education

## 6.2. WARD 02 VISION

To have well-developed infrastructure by 2030.

## 6.3. OBJECTIVES

- 🚧 To improve living standards through provision of basic services i.e. water, sanitation, waste removal, electricity
- 🚧 To provide adequate housing
- 🚧 To reduce crime
- 🚧 To reduce teenage pregnancy
- 🚧 To reduce illiteracy
- 🚧 To decrease mortality related to HIV/AIDS diseases, male circumcision

## 7. PROJECTS/PROGRAMMES

Objective Project Strategy	What will the ward do?	Support needed from municipality	Support needed from stakeholders
Housing	*Community consultations *Identify beneficiaries from ward 02 *Participate in Housing Forums	*Ensure that Housing Sector Plan is being implemented *Housing Forum to be well established *Housing officer to report on progress of hsg. Projects	*Dept. of Human Settlements to conduct workshop on Housing Subsidy *Dept. of Human Settlements to engage with municipality on feasibility of project
Electricity	Community consultations *Identify beneficiaries from ward 02 *Participate in electricity project Forums	*Electricity Forum to be well established *Electricity or Technical officer to report on progress of electricity Projects	*Dept. of Minerals and energy to conduct workshop on the electrification of houses in the ward *Dept. of Minerals and energy to engage with municipality on feasibility of project
Roads	Establish the transport Forums	Funds for the access roads and monitoring the seating of the transport forum	Fund the access roads projects for the Dept of Transport

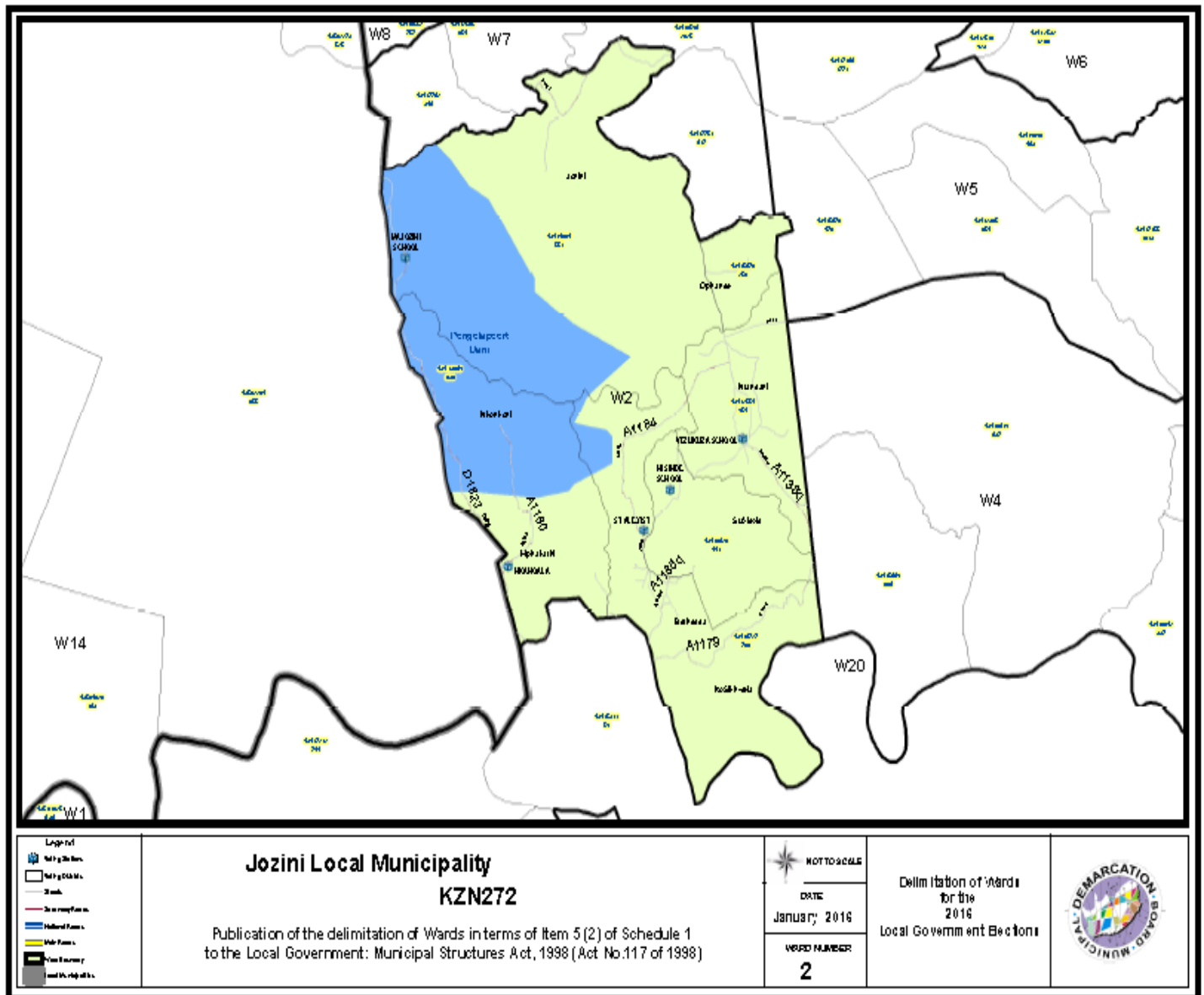
Crime Prevention	<ul style="list-style-type: none"> <li>*To participate in the CPF</li> <li>*Traditional leadership to play role</li> <li>*Form policing/neighborhood watch</li> <li>*Community Engagements</li> </ul>	<ul style="list-style-type: none"> <li>*To participate in CPF</li> <li>*integrate CPF &amp; existing municipal committee</li> <li>*Conduct workshops/awareness campaigns</li> <li>*Satellite police station: land/site required</li> <li>*Street lights in pathways and Parks</li> <li>*Vacant areas to be clean/grass cutting</li> </ul>	<ul style="list-style-type: none"> <li>*Dept. of Safety &amp; security to ensure CPF established</li> <li>*Conduct workshops in community</li> <li>*Satellite police station</li> <li>*Drug/Alcohol Abuse campaigns</li> <li>*Dept. of social welfare: Abuse campaigns</li> </ul>
Teenage Pregnancy	<ul style="list-style-type: none"> <li>*Participate in OSS</li> <li>*Engage with care givers</li> <li>*Participate in existing committees</li> <li>*Community Engagements on addressing youth</li> </ul>	<ul style="list-style-type: none"> <li>*To engage with relevant dept. to conduct workshop, awareness campaigns</li> <li>*Engage with schools on workshops</li> </ul>	<ul style="list-style-type: none"> <li>*Distribution of contraceptives</li> <li>*Love-life campaigns</li> <li>*Dept. of Health/Social Development to conduct workshops at schools</li> </ul>
Illiteracy	<ul style="list-style-type: none"> <li>*Community consultations</li> <li>*Identify children not attending school</li> <li>*Participate in relevant committees</li> </ul>	<ul style="list-style-type: none"> <li>*Engage with relevant committees/depts. to conduct workshops</li> <li>*ABET programmes</li> <li>*ECD programmes</li> <li>*Library</li> </ul>	<ul style="list-style-type: none"> <li>*Dept. of education/Arts &amp; Culture: programmes in place to improve education</li> </ul>
Health & Welfare	<ul style="list-style-type: none"> <li>*Community consultations</li> <li>*Identify community members that need access to clinics eg. elderly, disabled, children.</li> <li>*Door to door visits</li> <li>*Identify site for clinic</li> </ul>	<ul style="list-style-type: none"> <li>*Identify/confirm site for clinic</li> <li>*Engage with relevant depts..</li> <li>*Mobile-clinic</li> </ul>	<ul style="list-style-type: none"> <li>*Relevant Depts. health, welfare, social development</li> <li>*Participate in existing committees</li> </ul>

## 8. SUBMISSIONS TO THE IDP: WARD 2

BIG PROJECTS	CLINICS	SCHOOLS	ROADS	SMALL PROJECTS	SPECIAL PROGRAMMES
<ul style="list-style-type: none"> <li>• Electricity</li> <li>• Nkangala hall</li> <li>• RDP Houses</li> <li>• Water pipe at Kwamadinyane</li> <li>• Water</li> <li>• Majozini Sportsfield</li> <li>• Water pipe from Gujini to Qondile</li> <li>• Ezinkunini hall</li> <li>• Re-digging of dams</li> <li>• Qhoqhoqho hall</li> </ul>	<ul style="list-style-type: none"> <li>• Nkangala mobile clinic (shelter)</li> </ul>	<ul style="list-style-type: none"> <li>•</li> </ul>	<ul style="list-style-type: none"> <li>• Nkangala to Mavela</li> <li>• P326 road</li> <li>• Road from Nohhiya to Gobandlovu</li> <li>• Road at KwaFahla</li> <li>• Road from Esikhaleni to Ediphini</li> <li>• Road from Kwamamlambo to Ubombo</li> </ul>	<ul style="list-style-type: none"> <li>• Poultry project renewal</li> <li>• Digging of dam at Gobandlovu</li> <li>• Qhubekani goat farming</li> <li>• 3 pole tent and chairs</li> <li>• Vukamama hand-craft</li> <li>• Stars of tomorrow Development project (soccer)</li> </ul>	

<ul style="list-style-type: none"> <li>• Toilets</li> <li>• Pre-paid electricity</li> <li>•</li> </ul>			<ul style="list-style-type: none"> <li>•</li> </ul>	<ul style="list-style-type: none"> <li>kit/ jersey, attire for singers, tent, chairs, sound system)</li> <li>• Sportsfields</li> <li>• KwaFahla crèche</li> <li>• Attire for Amaponi Zulu dancers</li> <li>• Khangisa decoration project</li> <li>• Sibonokuhle poultry project</li> <li>• Isonga goat farming</li> <li>• Ezinkunini market stalls for Lethukuthula women's club</li> <li>• Mangwazana bakery</li> <li>• Mangwazana market stalls</li> <li>• Zamani Sewing club</li> <li>• Siyazama Catering</li> <li>• Digging of dam at Manqunjwana</li> <li>• Poultry project at Nkangala'</li> <li>• Vulindlela crèche</li> <li>• Madinyane crèche</li> <li>•</li> </ul>	
--	--	--	---	--	--

## 9. SPATIAL REPRESENTATION OF WARD





**Signatures:**

---

**Mr. S. Mathenjwa**  
**Ward Councillor**

---

**Mr. ZE Mpontshane**  
**Manager: Office of the Speaker**

---

**Mr. LB Mpontshane**  
**Acting Municipal Manager**